



## TRULS MARTINSSON

HEIGHT 190 - 6' 2.5"

CHEST 93 - 36"

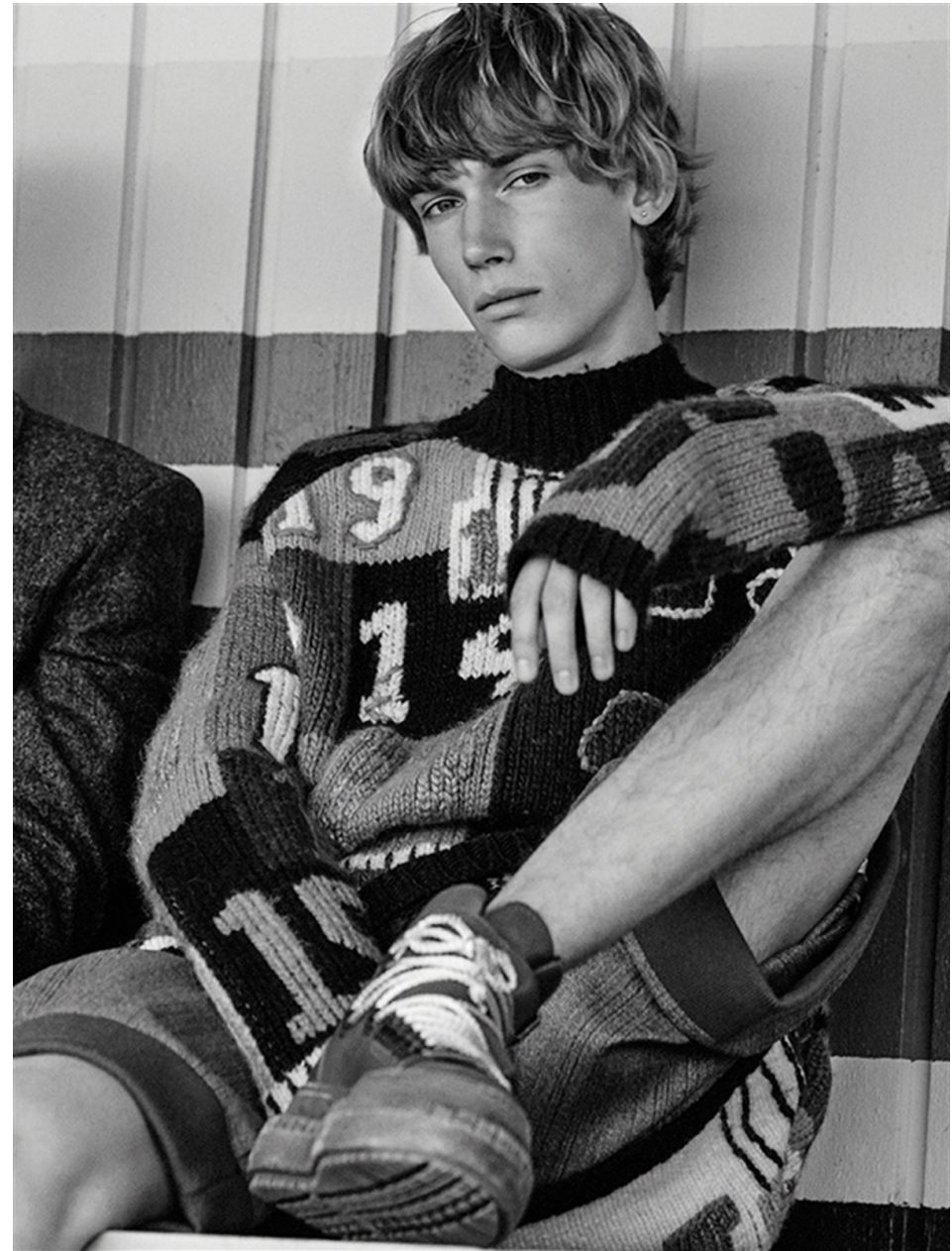
WAIST 76 - 30"

HIPS 94 - 37"

SHOES 44 - 10 1/2

HAIR BLONDE - BIONDO

EYES GREY - GRIGI









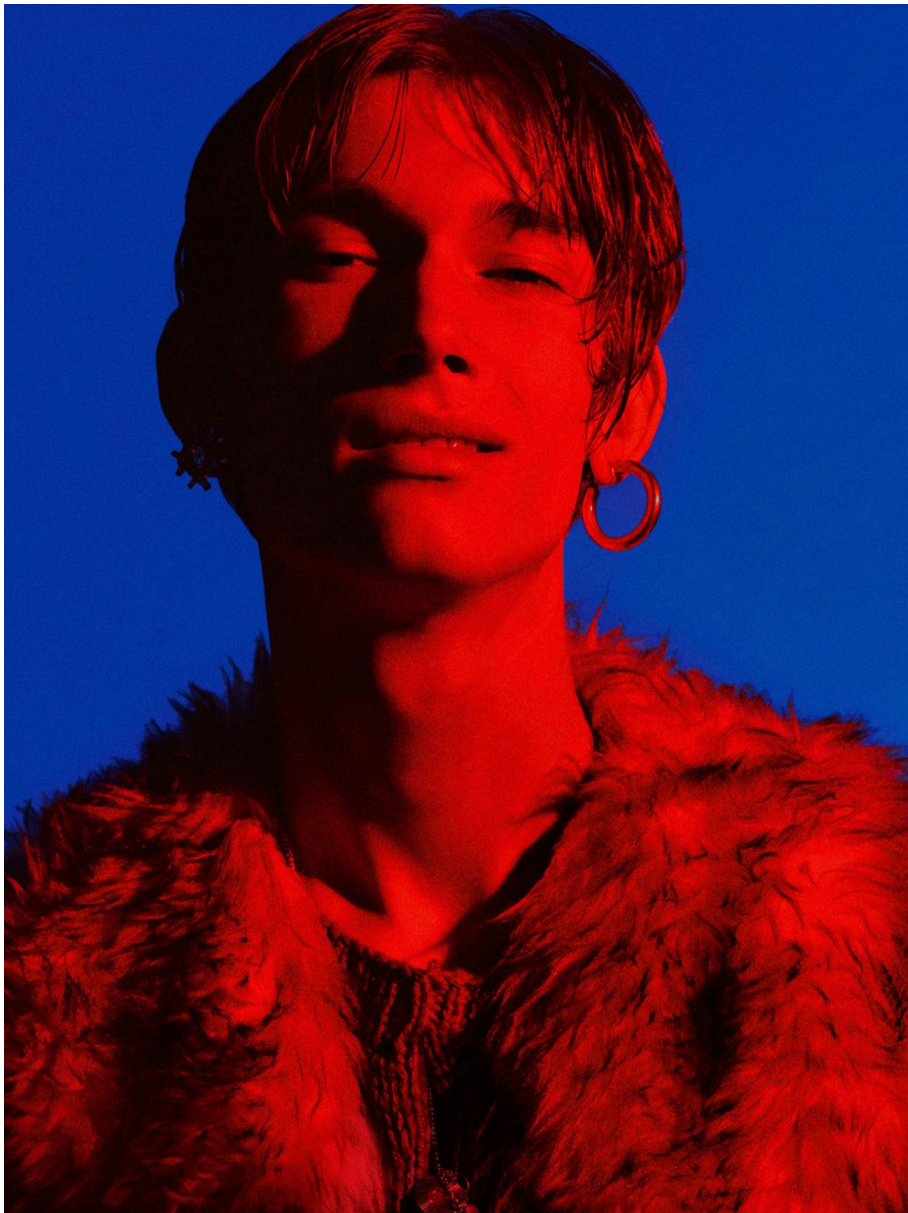










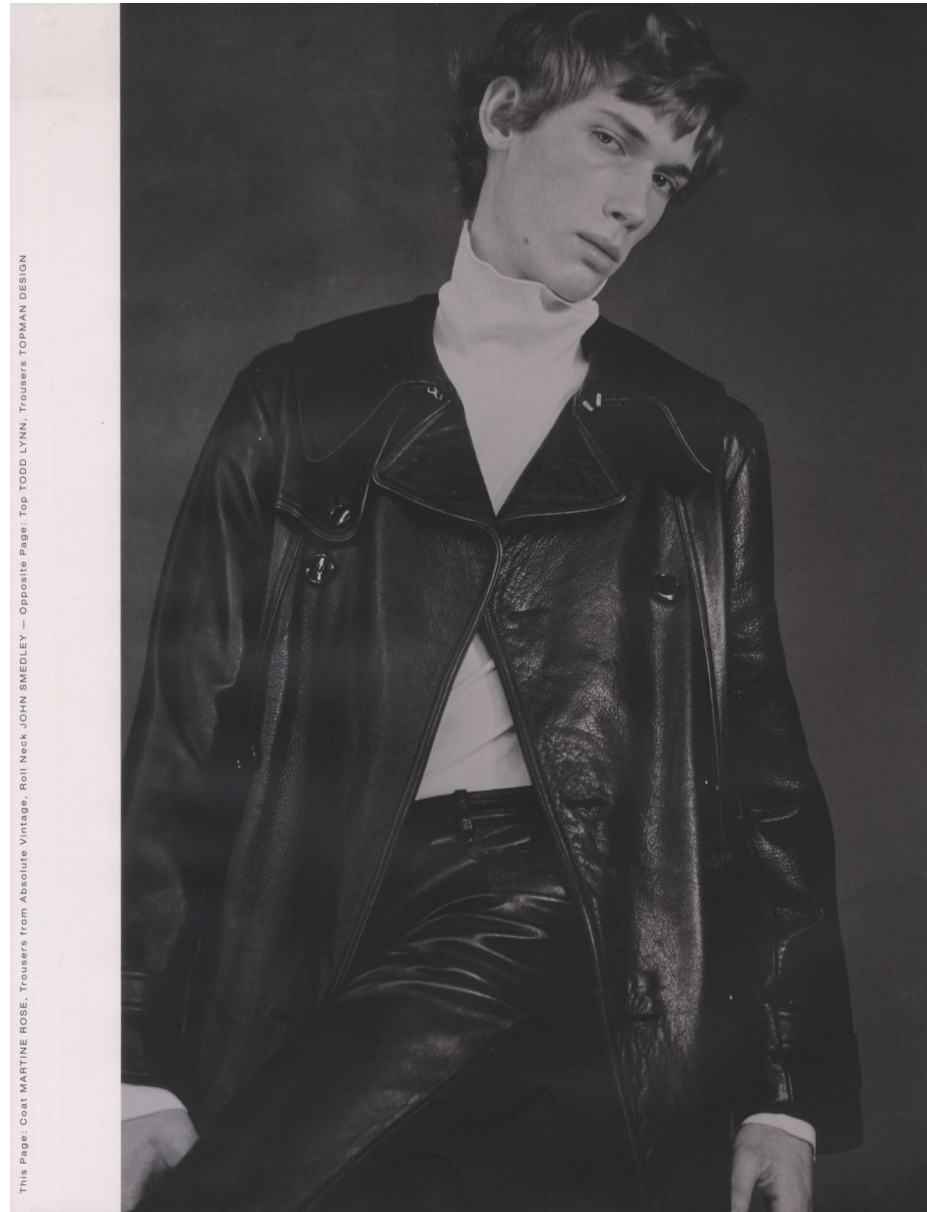




Cardigan VIVIENNE WESTWOOD, Roll Neck JOHN SMEDLEY







This Page: Coat MARTINE ROSE, Trousers from Absolute Vintage, Roll Neck JOHN SMEDLEY — Opposite Page: Top TODD LYNN, Trousers TOPMAN DESIGN

